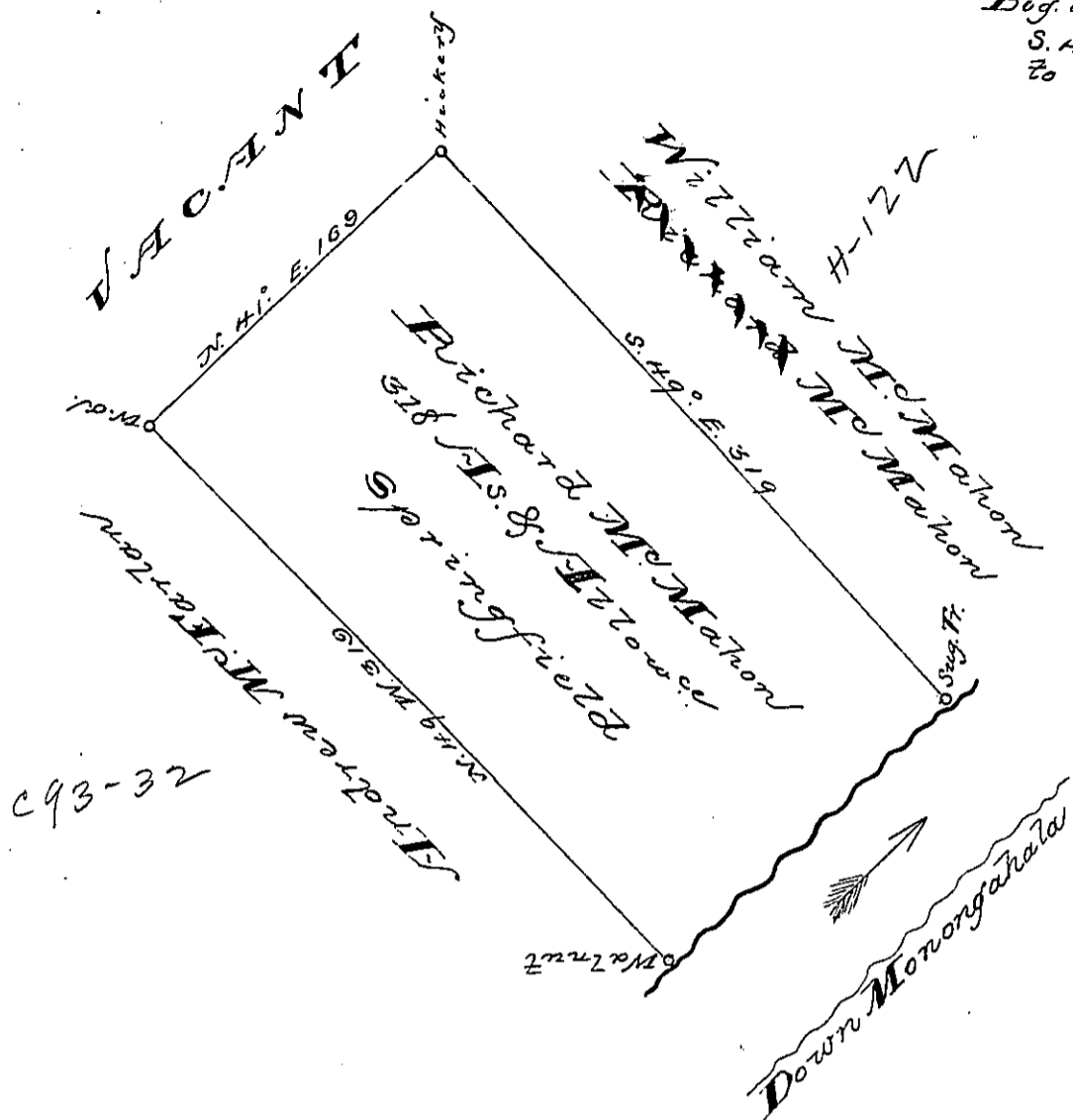


P-18-320 96
 Courses up Monongahala
 Beg. at a Sug. & running
 S. 41° W. 169 P }
 to a Walnut



In pursuance of an order N^o ~~700~~⁹⁵ dated 3^o April 1769
 the above is a draught of a tract of land call'd Spring-
 field situated on the Westside Monongahala
 containing 318 or 4 acres with the usual allowance of
 O.P.C. for roads, highways, &c
 Survey'd for ~~Richard~~ Mc Mahon 13th July 1769 by

Attended by direction of the Suror. Genl.
 on a Certif^t of S. Reichs Esq^r
 the 25th Apl. 1788.
 J. C. S.
 Do. John Lukens Esq^r

James Hendricks

IN TESTIMONY that the above is a copy of the original remaining on file in the
 Department of Internal Affairs of Pennsylvania, made con-
 formably to an Act of Assembly approved the 16th day of
 February, 1833, I have hereunto set my Hand and caused
 the Seal of said Department to be affixed at Harrisburg, this
 — eleventh — day of — March — 1892.

J. P. Stewart
 Secretary of Internal Affairs